

DATA SHEET

Manufacturer: Hatteland Technology AS
 Product: Industrial Ethernet Switch
 Type: HN GP1080A

i Dimensions might be shown with or without decimals and indicated as mm [inches]. Tolerance on drawings is +/- 1mm. For accurate measurements, check relevant DWG file.

HN GP1080A - Industrial Ethernet Switch

The HATTELAND® industrial range of high quality reliable Network Switches can be used in connecting several Ethernet devices like Ethernet I/O, IP-Camera or other Ethernet switches. The HN GP1080A is unmanaged, active PoE Ethernet switch with P.S.E. function. The HN GP1080A supports active Power over Ethernet, a system to transmit electrical power, along with data, to remote devices over standard twisted-pair cable in an Ethernet network.



IP 30
 Protection against
 Tools, thick wires, etc.



**Gigabit Ethernet
 switch**



5 Years Warranty



**PoE Ethernet
 switch**

TECHNICAL SPECIFICATIONS

8-PORT SLIM TYPE UNMANAGED GIGABIT
HN GP1080A

Technology

- Switching Bandwidth: 16Gbps
- MAC Table: 4096 MAC addresses
- Processing: Store-and-Forward
- Jumbo Frame: Up to 9k bytes
- Ethernet Standards:
 - IEEE 802.3 for 10Base-T
 - IEEE 802.3u for 100Base-TX
 - IEEE 802.3x for Flow control
 - IEEE 802.3at ^[1] PoE specification

Power Specifications

- Redundant Input power: Dual DC inputs. 50 - 57VDC on 6-pin terminal block.
- PoE Budget: 1 port max 30W, total max 180W
- Power consumption (Typ.): 6 Watts (PoE output not included)
- Overload current protection: Present
- Reverse polarity protection: Present

^[1] Note: Up to 30 Watts per port for PoE

Available Accessories

- SDR-120-48 1 x Power supply 48 VDC, 2.5A, 6-pin Terminal Block 5.08, Type Approved^[2]: DNV
- SDR-240-48 1 x Power supply 48 VDC, 5A, 6-pin Terminal Block 5.08, ^[2]
- SDR-480-48 1 x Power supply 48 VDC, 10A, 6-pin Terminal Block 5.08, Type Approved^[2]: DNV

^[2] Note: CCS - China Classification Society: Network switches and related power supplies are not required to be Type Approved.

Contents of Package

- 1 X HN GP1080A
- 1 X Wall-mounted kit (for Slim Type) :2 X Wall-Mount Plate
:6 X screw
- 1 X 6-Pin Terminal block
- 8 X Dust Cover
- 1 X Quick Installation Guide
- 1 X DIN-Rail kit / Factory Mounted

Physical Characteristics

- Enclosure: IP30
- Dimensions: W:26.10 [1.03"] x H:144.30 [5.68"] x D:94.90 [3.74"] mm [inch]
- Weight: 442g

Physical Ports and Controls

- DIP - Switch
- LED Indicators
- 8 x 10/100/1000Base-T(X) Ports in RJ45 With PoE
- Relay output to carry capacity of 1A at 24VDC

Additional Specifications

- MTBF 665276 hours
- Warranty 5 years

 All specifications are subject to change without prior notice! Please visit www.hattelandtechnology.com for the latest electronic version.

TECHNICAL SPECIFICATIONS

8-PORT SLIM TYPE UNMANAGED GIGABIT
HN GP1080A

Maritime:

- Environment Specification

- Storage Temperature: -40 to 85°C (-40 to 185°F)
- Operating Temperature: -15 to +55°C (5 to 131°F)
- Operating Humidity: 5% to 95% Non-condensing
- Air Pressure Maximum Altitude: Operating: 4000m - Storage: 12912m
- Compass Safe Distance: Standard: 30cm - Steering: 15cm

- Regulatory approvals

- EMC: CE EMC (EN55024, EN 55032)
- EMI: EN55032
- EMS: EN55024 (IEC/EN 61000-4-2 (ESD), IEC/EN 61000-4-3 (RS), IEC/EN 61000-4-4 (EFT), IEC/EN 61000-4-5 (Surge), IEC/EN 61000-4-6 (CS), IEC/EN 61000-4-8 (PFMF), IEC/EN 61000-4-11 (DIP))
- Shock: IEC60068-2-27
- Vibration: IEC60068-2-6
- Safety: EN62368-1 compliant

- Type Approvals

These products have been tested / type approved by the following classification societies:
IEC 60945 4th (EN 60945:2002), **IACS E10**
DNV - Det Norske Veritas, **KR** - Korean Register of Shipping
ClassNK - Nippon Kaiji Kyokai, **BV** - Bureau Veritas
CCS - China Classification Society, **LRS** - Lloyd's Register of Shipping

Industrial:

- Environment Specification

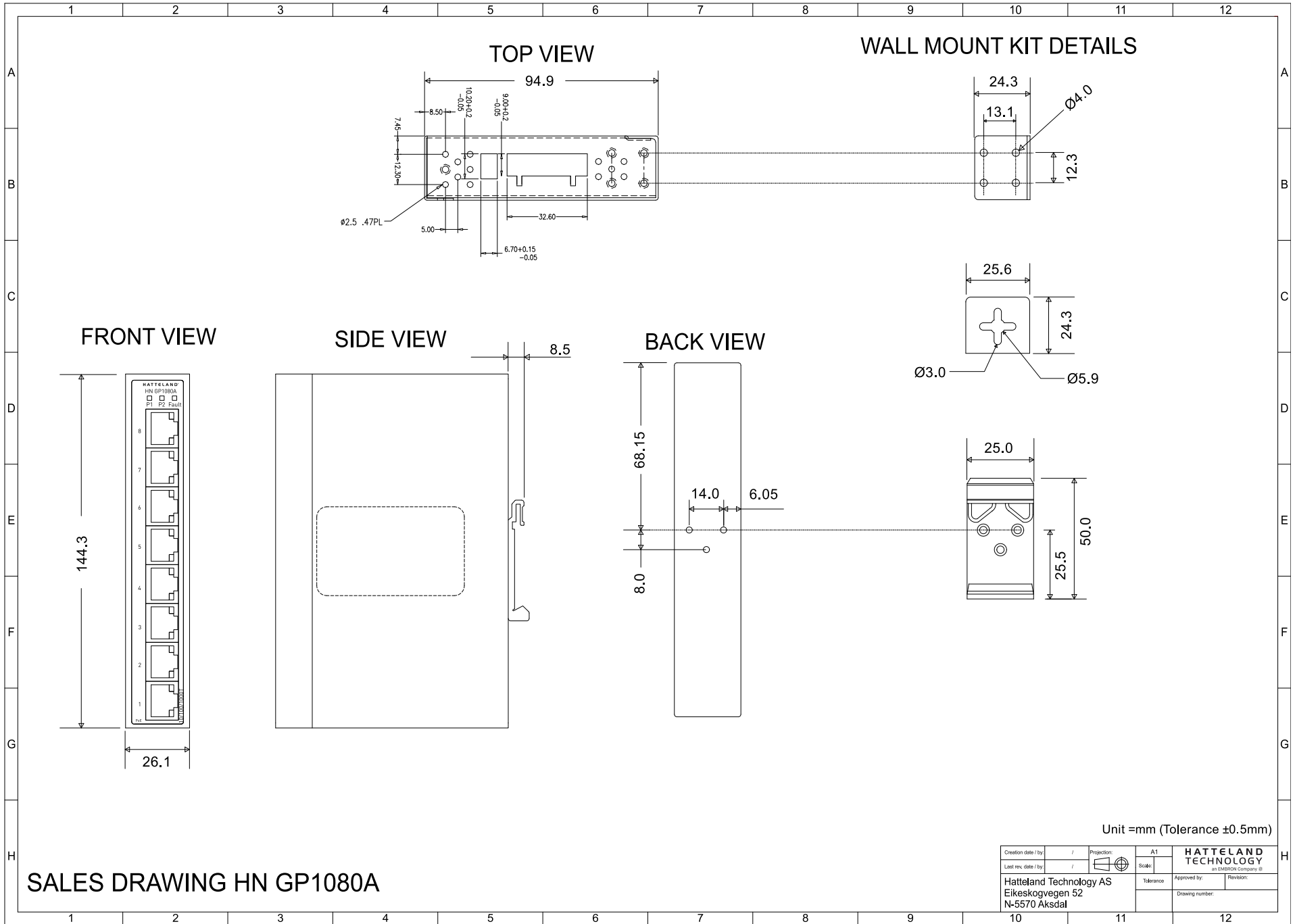
- Storage Temperature: -40 to 85°C (-40 to 185°F)
- Operating Temperature: -40 to +70°C (-40 to 158°F)
- Operating Humidity: 5% to 95% Non-condensing

- Regulatory approvals

- EMC: CE EMC (EN55024, EN 55032), FCC Part 15 B
- EMI: EN55032, CISPR 32, EN61000-3-2, EN61000-3-3, FCC Part 15 B class A
- EMS: EN55024 (IEC/EN 61000-4-2 (ESD), IEC/EN 61000-4-3 (RS), IEC/EN 61000-4-4 (EFT), IEC/EN 61000-4-5 (Surge), IEC/EN 61000-4-6 (CS), IEC/EN 61000-4-8 (PFMF), IEC/EN 61000-4-11 (DIP))
- Shock: IEC60068-2-27
- Free Fall: IEC60068-2-31
- Vibration: IEC60068-2-6
- Safety: EN62368-1 compliant

 All specifications are subject to change without prior notice! Please visit www.hattelandtechnology.com for the latest electronic version.

i Dimensions might be shown with or without decimals and indicated as mm [inches]. Tolerance on drawings is +/- 1mm. For accurate measurements, check relevant DWG file.



SALES DRAWING HN GP1080A

Unit =mm (Tolerance ±0.5mm)

Creation date / by	/ /	Projection:	A1	HATTELAND TECHNOLOGY an EMBRON Company ©	
Last rev. date / by	/ /	Scale:		Tolerance:	Approved by:
Hatteland Technology AS Eikeskogvegen 52 N-5570 Aksdal				Revision:	
				Drawing number:	